

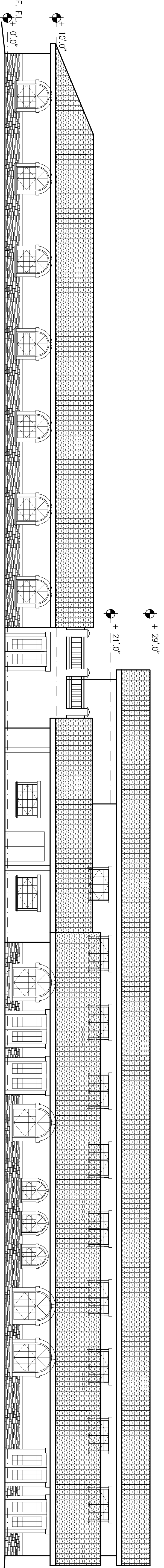


**Two Rivers Architects**  
 13405 FOLSOM BLVD., BLDG. #300  
 FOLSOM, CALIFORNIA 95630  
 PHONE: (916) 359-7556  
 FAX: (916) 359-7556  
 www.tworiversaia.com



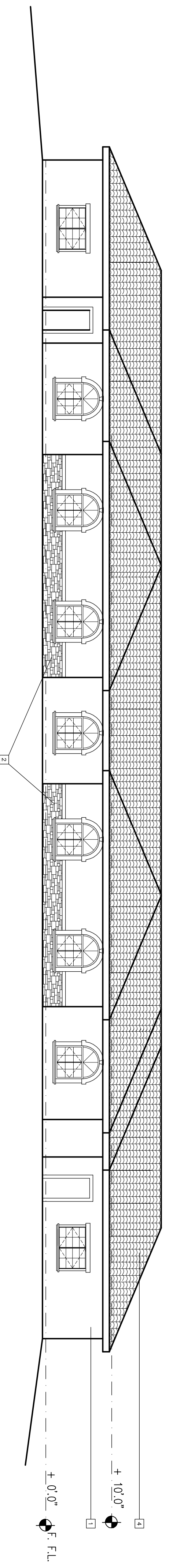
These drawings and accompanying specifications are instruments of service prepared by Two Rivers Architects and their use shall be restricted to the original site for which they were prepared—use or reproduction by any other person without the written permission of Two Rivers Architects.

© 2004 Two Rivers Architects  
 CONSULTANT



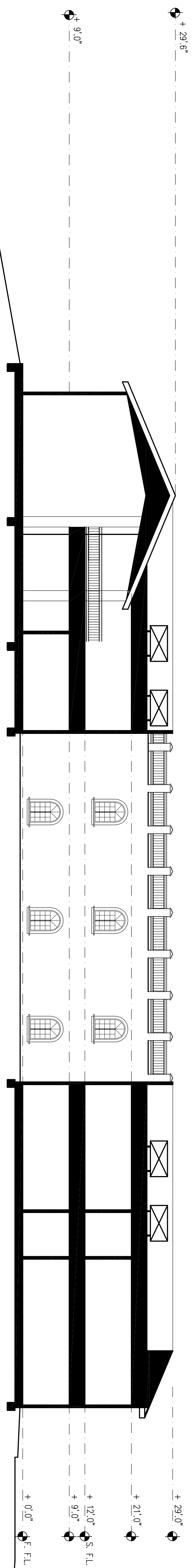
**NORTH ELEVATION**

3/32" = 1'-0"



**EAST ELEVATION**

3/32" = 1'-0"



**SECTION A - A**

3/32" = 1'-0"

FOR TYPICAL NOTES AND MATERIALS, SEE SHEET AA.1.

KEY PLAN

REVISIONS

PROJECT TITLE  
**Senior Care  
 Of Citrus Heights**  
 8220 Sunrise Blvd.  
 Citrus Heights, CA.

SHEET TITLE  
**Elevations and Sections  
 Preliminary Planning**

DRAWN BY LW	CHECKED BY LW
PROJECT NO. 1048	SHEET NO. A4.2
COMPUTER NO. 03	DATE 10-06-08